



2 PRIMROSE ROAD
DOVER

£795

- Three Double Bedrooms
- Newly Renovated
- Great Size Garden
- Popular Location

LOCATION

"Dover is a major ferry port town and faces France across the Strait of Dover, the narrowest part of the English Channel. It is home of the Dover Calais ferry through the Port of Dover and is famous for both its White Cliffs and Dover Castle that has historically performed a function of protection against invaders.

Dover's main commuting roads are the A2 and A20, connecting the town with Canterbury and London. Fast link trains run from Dover Priory to London St Pancras International stations and Ramsgate."

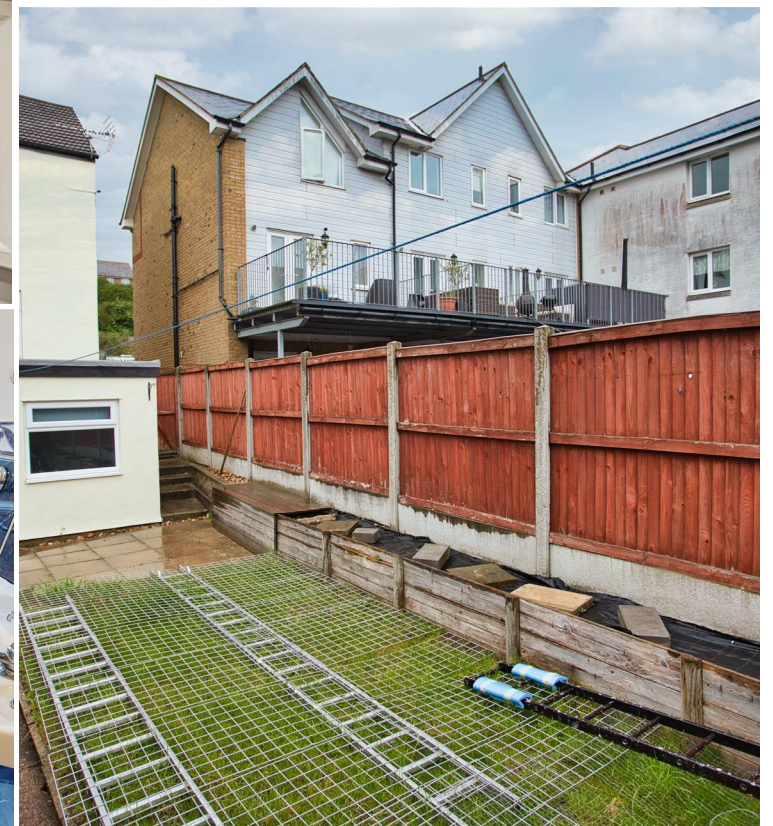
ABOUT

Miles & Barr are delighted to present to the market this Newly Renovated Three Double Bedroom End Of Terrace Home! With Spacious Accommodation throughout and a Great Size Rear Garden, this property would make a perfect family home.

With entrances on both the Ground & Basement Levels, this property can be incredibly versatile. On the Basement Level you will find the Kitchen, Dining Room, Bathroom and Garden. On the Ground Floor, there is the Living Room and First Double Bedroom. Then on the First Floor, an additional Two Double Bedrooms.

For Further Enquiries and Information, please contact Sole Agents Miles & Barr!

DESCRIPTION



2 PRIMROSE ROAD DOVER



4 High Street, Dover, Kent, CT16 1DJ

t. 01304 240011 e. lettingseastkent@milesandbarr.co.uk



Energy Efficiency Rating		
	Current	Potential
Very energy efficient - lower running costs		
(92 plus) A		91
(81-91) B		
(69-80) C	70	
(55-68) D		
(39-54) E		
(21-38) F		
(1-20) G		
Not energy efficient - higher running costs		
England & Wales		EU Directive 2002/91/EC

In Compliance with the Consumer Protection from Unfair Trading Regulations 2008 we have prepared these sales particulars as a general guide to give a broad description of the property. They are not intended to constitute part of an offer or contract. We have not carried out a structural survey and the services, appliances and specific fittings have not been tested. All photographs, measurements, floorplans and distances referred to are given as a guide and should not be relied upon for the purchase of carpets or any other fixtures or fittings. Lease details, service charges and ground rent (where applicable) are given as a guide only and should be checked and confirmed by your Solicitor prior to exchange of contracts. For Referral Fee Disclosure please visit:

www.milesandbarr.co.uk/referral-fee-disclosure